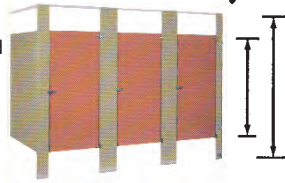


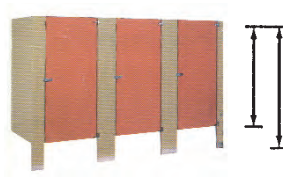
# RESTROOM PARTITION QUOTE FORM

## 1 SELECT TYPE OF MOUNTING: OVERHEAD BRACED (or) FLOOR MOUNTED (or) CEILING HUNG.

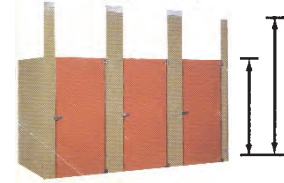
**NOTE:** OVERHEAD BRACED units are sturdy, offer rigidity. FLOOR MOUNTED units are used in areas with low ceilings. FLOOR MOUNTED units require a 3" thick concrete floor for anchoring. CEILING HUNG units permit easy maintenance of floors. Sturdy steel ceiling supports are required for attachment. Each compartment is shipped complete with all hardware needed for installation.



OVERHEAD BRACED



FLOOR MOUNTED



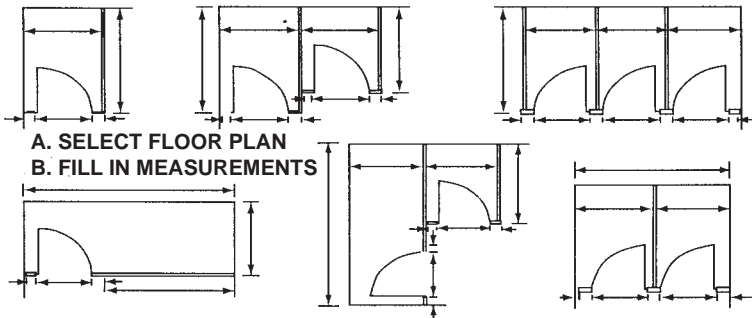
CEILING HUNG

A. CHOOSE TYPE OF MOUNTING  
B. FILL IN MEASUREMENTS

## 2 SELECT YOUR FLOOR PLAN. IF ONE OF THESE LAYOUTS MEETS YOUR NEEDS, ADD THE MEASUREMENTS BETWEEN THE ARROWS.

**NOTE:** Inform us if layout is free standing, a corner layout, between walls, an alcove layout or one for handicapped users. Youngs—in coordination with Metpar—will inform you regarding space required between pilasters and walls. Layouts of compartments for handicapped have minimum door openings of 34" and 36", minimum depths of 60" and 72", and minimum widths of 36", 38", or 40", depending upon local codes. Check ADA requirements in your area.

**NOTE:** Please indicate existing walls on diagrams. Send additional drawings if possible.

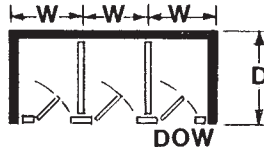


A. SELECT FLOOR PLAN  
B. FILL IN MEASUREMENTS

## 3 SPECIFY THE MEASUREMENTS OF EACH COMPARTMENT INDICATE OVERALL WIDTH, DEPTH (FRONT TO BACK), AND DOOR OPENING WIDTH.

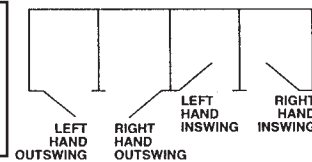
Tell us if the door swings in or out, and if door is hinged on the left or right.

A. SPECIFY MEASUREMENTS



W - WIDTH  
D - DEPTH  
DOW - DOOR OPENING WIDTH

B. SPECIFY DOOR SWING



## 4 YOUR CHOICE OF MATERIAL & FINISH - CHECK YOUR CHOICE

Engineering specifications on each type of material are available on request.

- BAKED ENAMEL (POWDER SHIELD)  
Economical Installations
- PLASTIC LAMINATE  
Durable Material
- SOLID PLASTIC (POLLY™)  
Extremely Durable – Resists Vandalism

- PHENOLIC  
Durable - Resists Vandalism
- SOLID CORE STAINLESS STEEL – For Deluxe Installations – Satin Finish
- STAINLESS STEEL – Lighter Duty than Solid Core Stainless Steel

## 5 CHOOSE FROM THESE STANDARD SIZES OF PANELS, DOORS AND PILASTERS:

**NOTE:** ALL MATERIALS ARE MADE TO YOUR SPECIFICATIONS AND ARE NON-RETURNABLE.

\*NOTE: Solid Plastic (Polly™) doors and panels are 55" standard height. Solid Plastic door widths may vary from sizes in chart above.

PANEL & DOOR SIZES*					
Baked Enamel & Stainless Steel Panels - 58" High		Doors - 58" High		Plastic Laminate & Phenolic Panels - 58" High	
Available in the following widths		Available in the following widths		Available in the following widths	
16"	51-3/4"	21-5/8"	16"	45-1/2"	21-1/2"
22"	54-3/4"	22-5/8"	21-1/2"	51-1/2"	23-1/2"
24"	57-3/4"	23-5/8"	23-1/2"	54-1/2"	25-1/2"
28"	59"	24-5/8"	25-1/2"	57-1/2"	31-1/2"
30"	65"	25-5/8"	28"	65"	33-1/2"
34"	68"	31-5/8"	31-1/2"	68"	35-1/2"
40"	69-3/4"	33-5/8"	33-1/2"	69-1/2"	
45-3/4"	75-3/4"	35-5/8"	35-1/2"	75-1/2"	
			40"		

**PILASTER WIDTHS**  
Baked Enamel, Stainless Steel, Plastic Laminate and Solid Plastic (Polly™).

Available in 2"\* , 3", 4", 5", 6", 7", 8", 10", 12", 14", 18" and 24" widths for all models shown.

\*NOTE: 2" width is not available for Plastic Laminate, Solid Plastic (Polly™) or Phenolic.

## 6 \*FINISH AND COLOR

COLOR CHARTS ARE AVAILABLE ON REQUEST FOR BAKED ENAMEL (POWDER SHIELD), PLASTIC LAMINATE, SOLID PLASTIC (POLLY™) AND PHENOLIC. MOST POPULAR COLORS BELOW. CALL FOR OTHER COLORS.



INSTITUTION OR COMPANY \_\_\_\_\_ DATE \_\_\_\_\_  
 STREET ADDRESS \_\_\_\_\_  
 CITY, STATE, ZIP \_\_\_\_\_ E-MAIL \_\_\_\_\_  
 NAME \_\_\_\_\_ PHONE NO. \_\_\_\_\_ FAX NO. \_\_\_\_\_